

# PATHFINDER<sup>®</sup> MAP PACK<sup>™</sup>



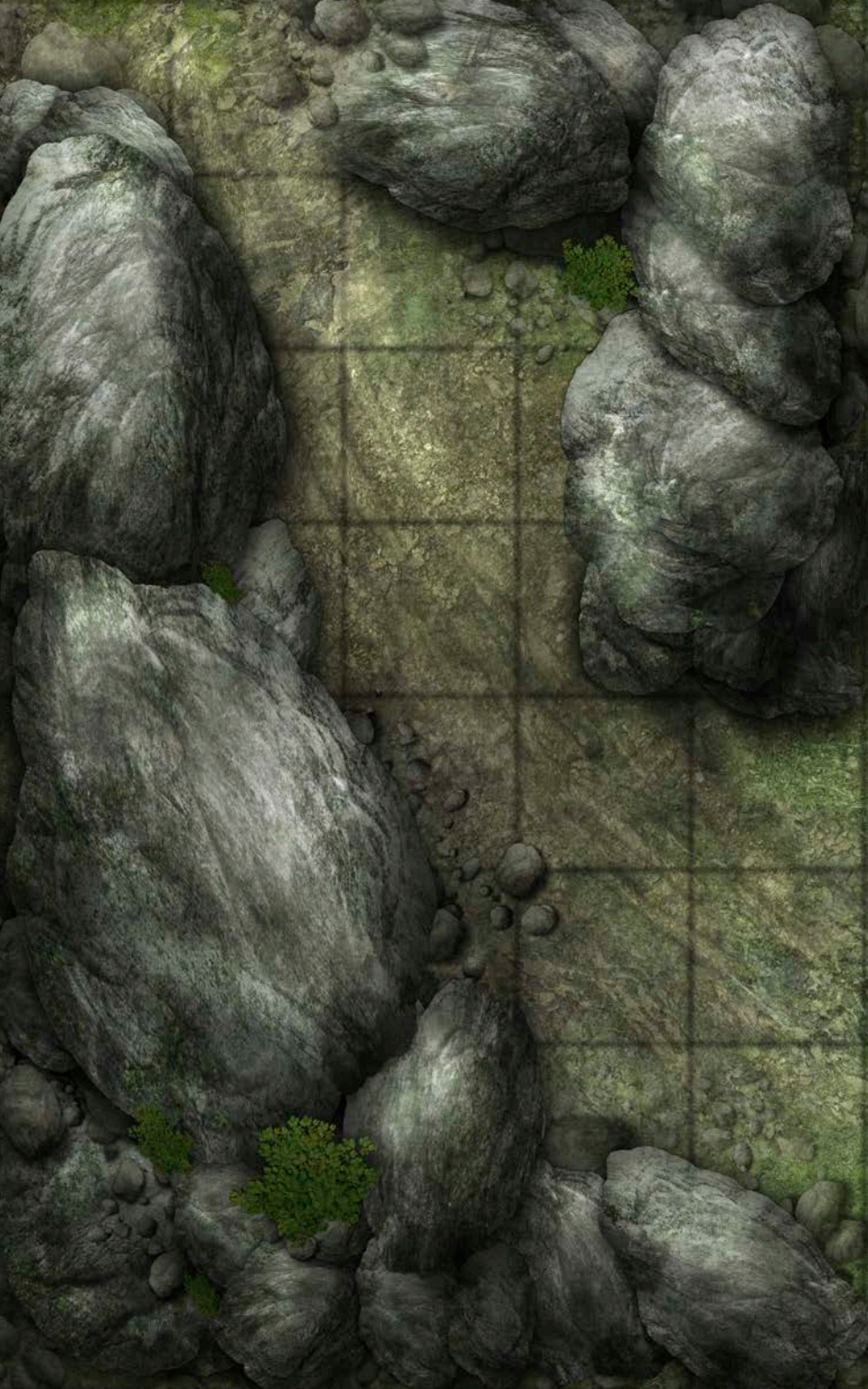
## CAMPS & SHELTERS

CONTAINS 18 FULL-COLOR MAP TILES

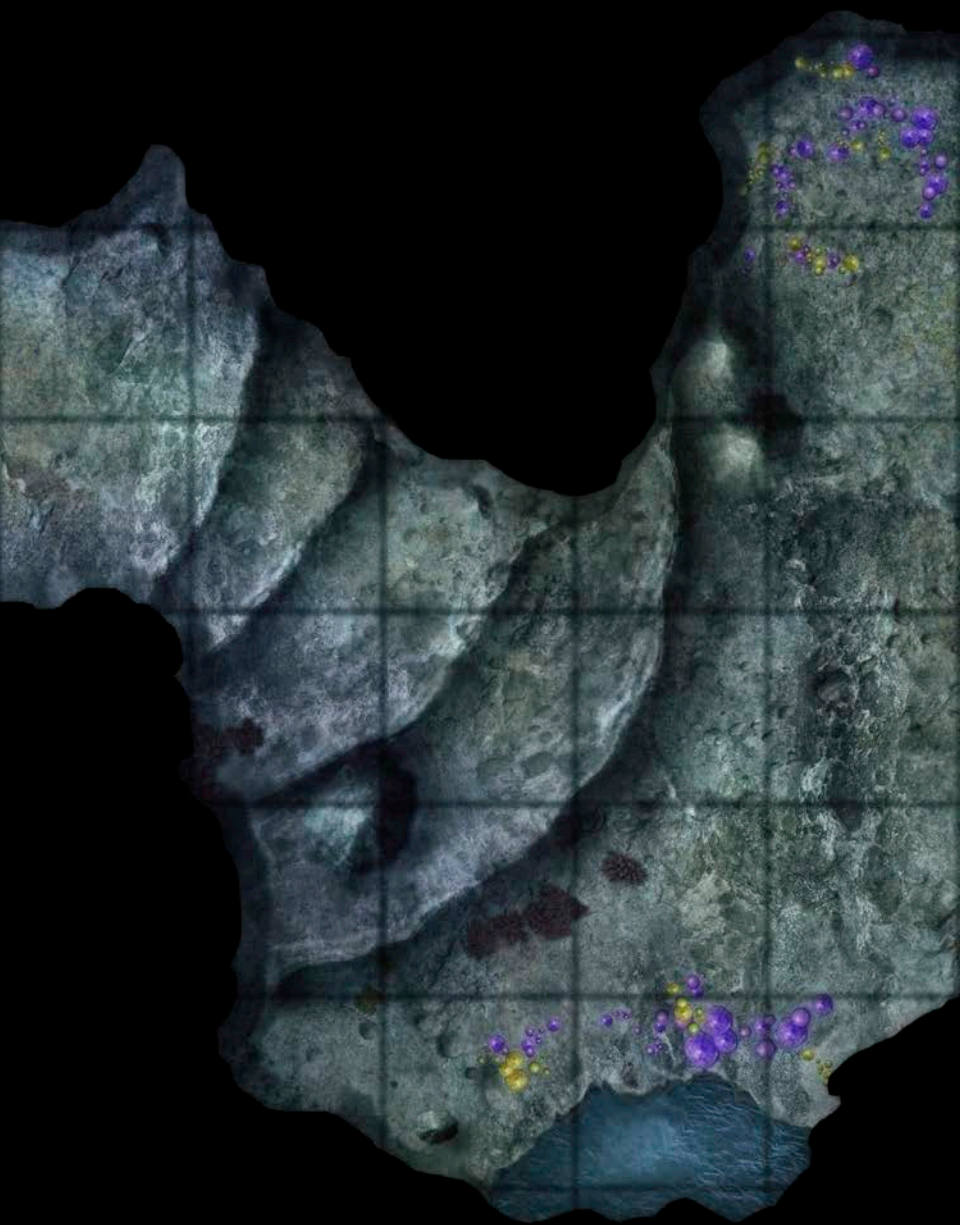
Wet, Dry, and Permanent Markers Erase from the Tiles



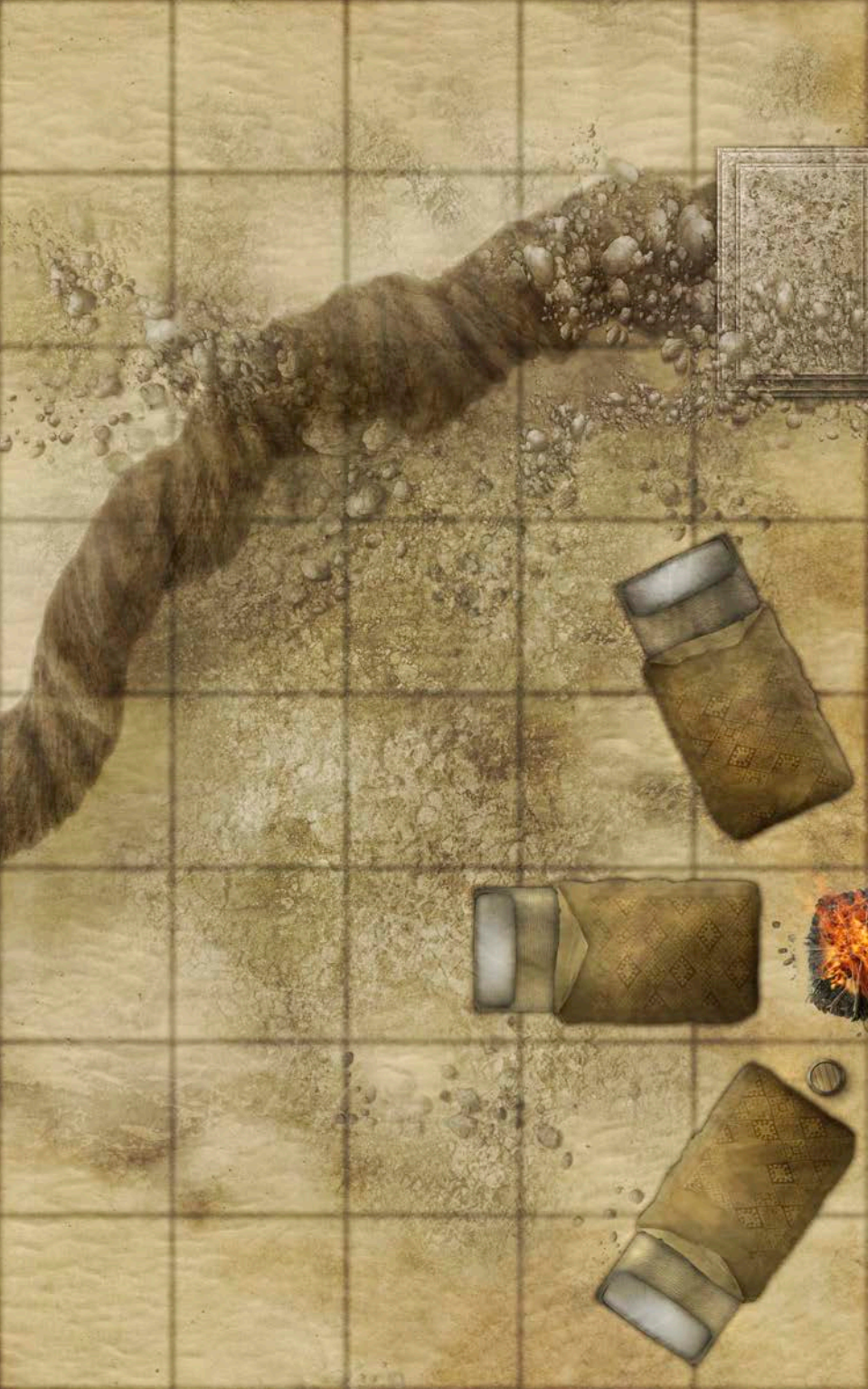




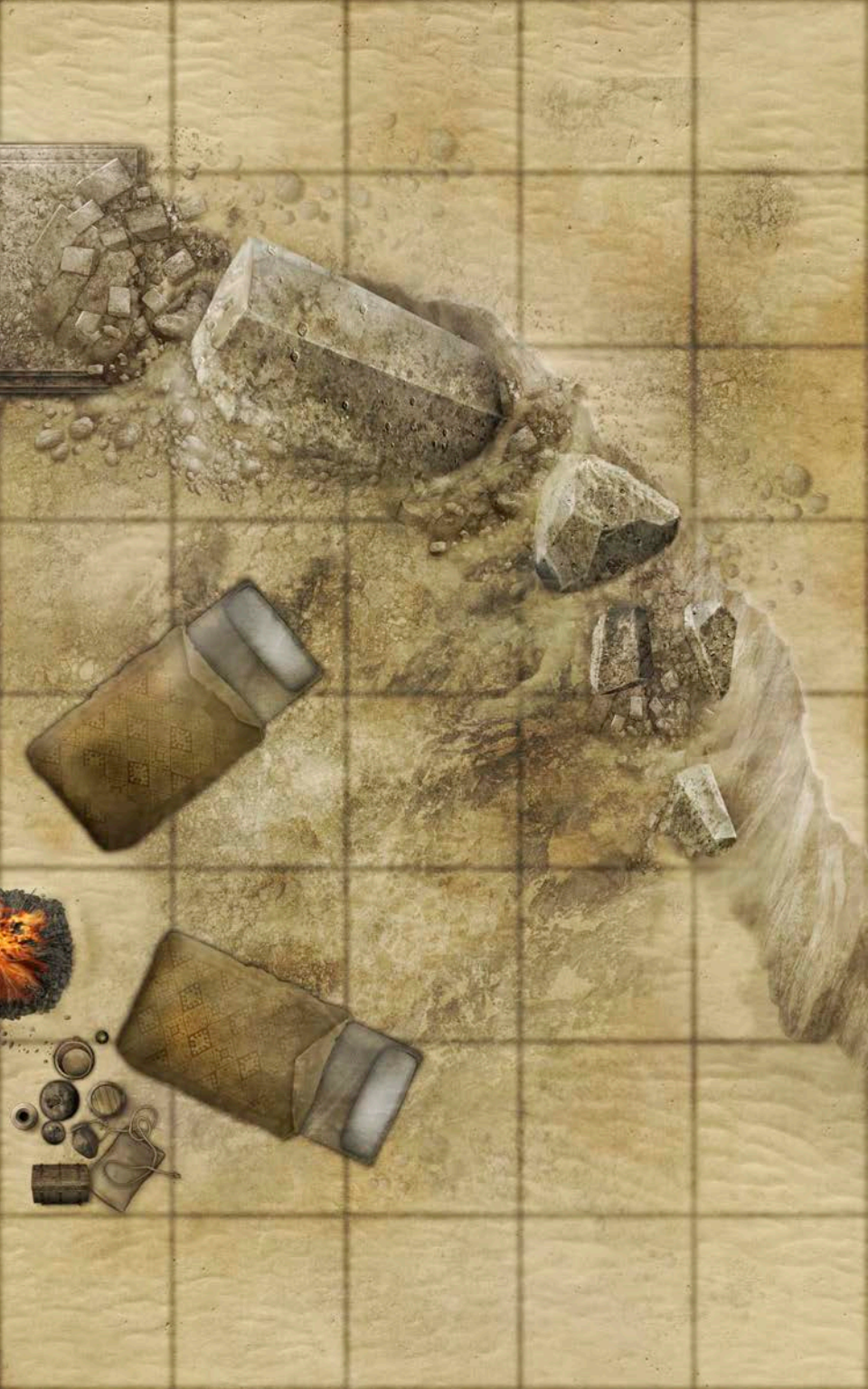






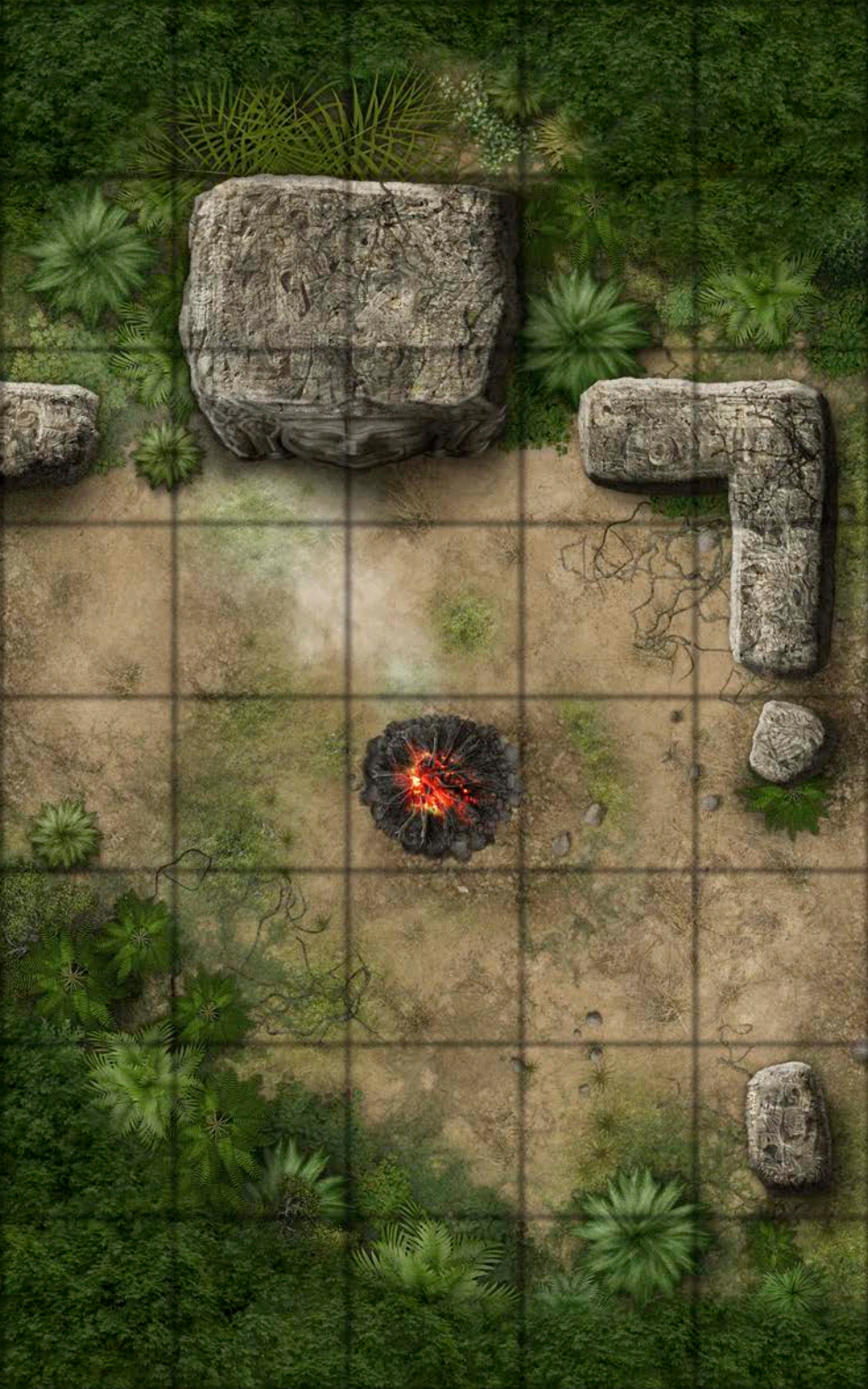














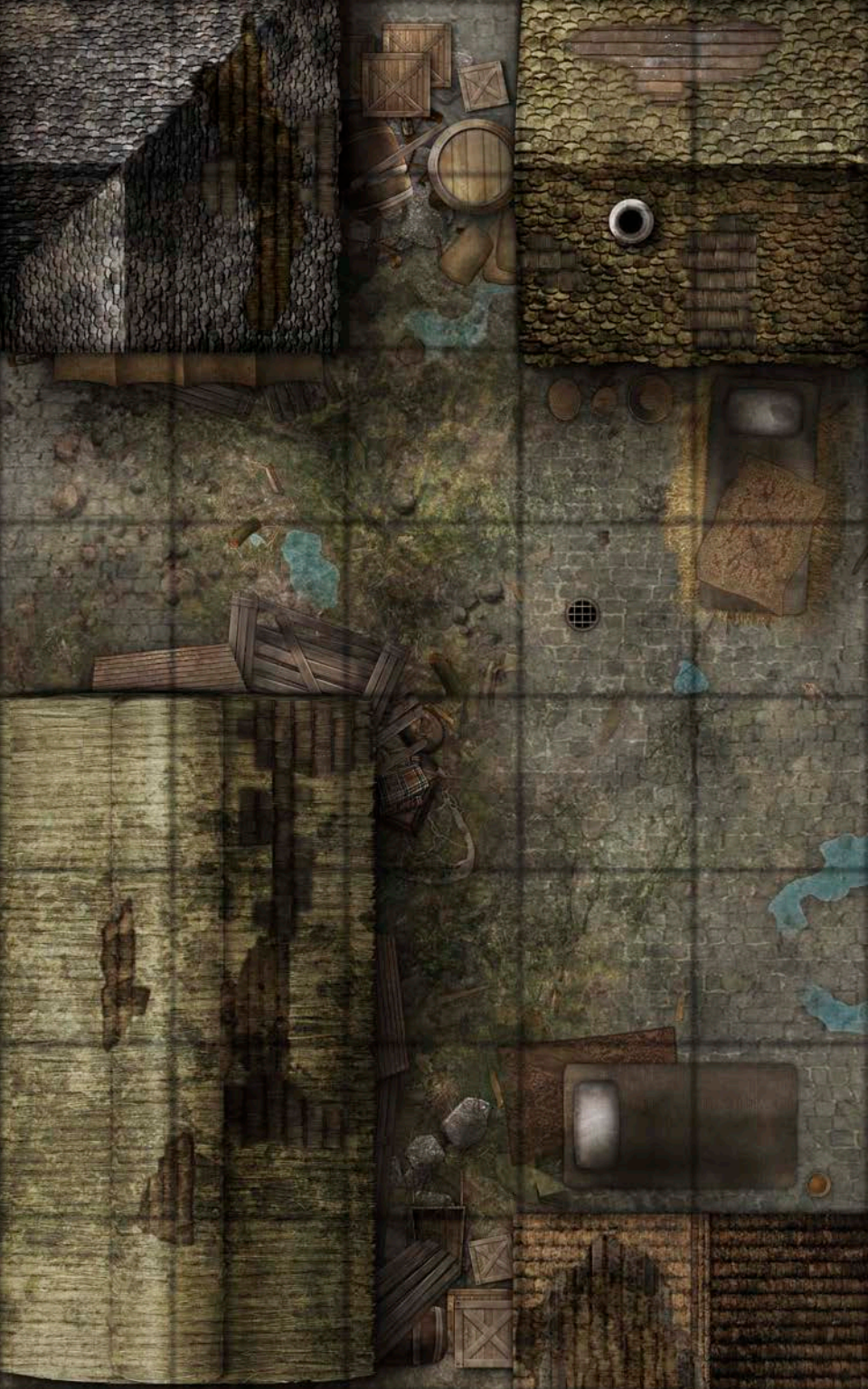














# PATHFINDER MAP PACK



## SHELTER FROM THE STORM

Even the hardest adventurers need to sleep, snatching moments of rest in monster-filled woods or haunted ruins. Whether your heroes are grabbing some shut-eye in a trap-filled temple or huddled around a campfire under the stars, there's no need to sketch every dry cave and sheltering embankment. This Pathfinder Map Pack provides stunningly illustrated 5" x 8" map tiles that can be positioned to form a variety of modular, customizable campsites. Inside, you'll find 18 richly crafted map tiles, including:

- Prairie Lean-Tos
- Desert Bivouac
- Ruined Temple Refuge
- Stony Campsite
- Cave Chamber
- Forgotten Cabin
- Dungeon Resting Place
- Forest Clearing Camp
- Back-Alley Retreat

Game Masters shouldn't waste their time drawing maps every time adventurers need to stop for the night. With *Pathfinder Map Pack: Camps & Shelters*, you'll always be ready to ambush them in their sleep!



Paizo Inc., 7120 185th Ave NE, Ste 120, Redmond, WA 98052-0577  
© 2015 Paizo Inc.  
Printed in China.

Paizo, Paizo Inc., the Paizo golem logo, Pathfinder, and the Pathfinder logo are registered trademarks of Paizo Inc.; Pathfinder Flip-Mat, Pathfinder Map Pack, and Pathfinder Roleplaying Game are trademarks of Paizo Inc. © 2015 Paizo Inc.

[paizo.com/maps](http://paizo.com/maps)

Design by Stephen Radney-MacFarland  
Cartography by Jason Engle

ISBN 978-1-60125-759-8

US \$13.99



5 1 3 9 9 >



9 781601 257598

PZO4056